

ARTIFICIAL INTELLIGENCE

Five Considerations for Teacher Use

1



POLICIES & GUIDELINES

Does the tool adhere to the relevant policies and guidelines of your school?

2



ETHICAL DATA USE

Is the tool GDPR compliant? Do not use personal or student data.

3



EVIDENCE OF IMPACT

Will the AI tool improve learner outcomes or experiences? Are there examples or case studies?

4



BIAS AWARENESS

What steps are you taking to identify and mitigate biases in your AI tools?

5



ACCURACY OF OUTPUT

Have you checked the output against other sources before sharing with students?

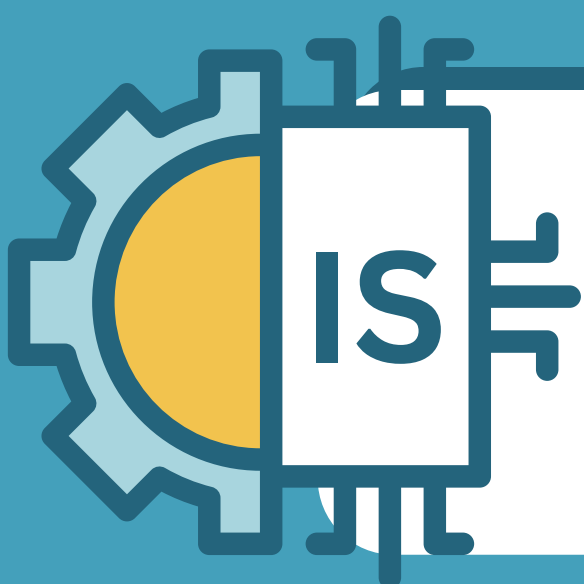


[AI IN SCHOOLS HUB](#)



Oide

Technology
in Education



INTLEACHT SHAORGA

Cúig Bhreithniú
d'Úsáid an Mhúinteora

1



POLASAITHE AGUS TREOIRLÍNTE

An gcloíonn an uirlis le beartais agus le treoirlínite ábhartha do scoile.

2



ÚSÁID SONRAÍ EITICIÚIL

An bhfuil an uirlis i gcomhréir le RGCS? Ná roinn sonraí pearsanta nó sonraí daltaí.

3



FIANAISE AR THIONCHAR

An gcuirfidh an uirlis IS feabhas ar thorthaí nó ar eispéiris foghlaimoírí?
An bhfuil samplaí nó cás-staidéir le fáil?

4



FEASACHT AR CHLAONTACHT

Cad iad na bearta atá tú a dhéanamh chun laofachtaí i do chuid uirlisí IS a aithint agus a laghdú?

5



CRUINNEAS AN ASCHUIR

An ndearna tú comparáid idir an aschur agus foinsí eile sular roinn tú é le daltaí?



[INTLEACHT SHAORGA
I SCOILEANNA](#)



Oide

Technology
in Education